

## Multimedia Data Center for Ticino



Visualization of RSI's Comano Campus as it will look after its extension.

050.7419

Radiotelevisione Svizzera (RSI) is planning to consolidate all of its Italian-language television, radio and multimedia activities at a single site in Comano near Lugano. One core project is the construction of a media data center. Connectivity and distributors from R&M simplify network management in data centers.

The rapid changes in the era of digitalization are posing a major challenge for public radio and television companies. Multimedia, Internet, podcasts and live streaming complement traditional studio production. There is a convergence of television, radio and the Internet. It goes without saying that today's media consumers expect to be able to receive everything on their mobile phone, tablet, laptop or smart TV concurrently and use it all as interactively as possible.

### Digitalization of the media

As a result, media professionals are increasingly operating in a fully digitized environment. For them, it is important to be able to incorporate data, graphics and high-resolution digital image and video material into posts with just a few clicks. Modern digital platforms require significant processing power, and reporting via live stream requires new mobile solutions and fast data transmission.

In addition, huge amounts of multimedia data are created over time, requiring both storage and administration. As a public service broadcaster, RSI bears a great responsibility for regional cultural assets, which must be digitally archived in terms of sound and image.



RSI's new media data center

050.7420

### Largest data center

This is why RSI wants to merge and optimize the digital media world with its various platforms at its Comano premises. A media data center (MDC) was set up and put into operation for this purpose.

When planning the data center, RSI defined a series of overarching criteria for the technology and infrastructure. Everything had to be practical, space-saving and durable, according to Stefano Pagani, CTO RSI, and Luca Mammoletti, Head of Power Supply and Telecommunications.

Together with a distributor, R&M had the opportunity to present its portfolio for copper and fiber optic networks. RSI had set aside enough time for evaluation and planning. As a result, R&M was able to clarify a number of technical details at an early stage and put together a suitable configuration. R&M provided distribution products for testing so that those responsible at RSI could find out which solution best suited their needs.

### Criteria met

The RSI team paid particular attention to handling during patching. They confirmed the smooth and convenient operation of the R&M platforms for copper and fiber optic cabling.

The team also rated the optical distribution frame ODF PRIME positively. PRIME enables an above-average density of ports and cabling so that the space available in the data center can be used optimally.

**«We are very satisfied with the cabling solution for our media data center.»**

**Luca Mammoletti, Head of Power Supply and Telecommunications, Radiotelevisione Svizzera Italiana (RSI)**

### Radiotelevisione Svizzera Italiana (RSI)

Radiotelevisione Svizzera Italiana (RSI) is a division of the Swiss public media broadcaster SRG SSR. Its task is to produce Italian-language programs and make them available to the Swiss population. RSI uses Internet streaming, podcasting and Digital Audio Broadcasting (DAB) for this purpose.

The Comano site will be converted into a media campus and renovated in order to concentrate activities in one place, increase the efficiency of broadcasting, and strengthen the media presence of public service in Italian.

For the region, RSI plays a role not only as a multimedia news medium, entertainment provider, responsible cultural carrier and employer, but also as a media archive. There are already more than 500,000 hours of video and audio documents, a million articles and 250,000 photographs in the archives. With around 1,000 full-time positions, RSI is the second-largest employer in the canton after the cantonal administration.



R&M also fulfilled the criterion of long product service life. They are generally configured for use over several network generations. Together with the certified installer, R&M offered a 25-year system warranty and after-sales services. The data center project started out from this basis in April 2022. The installation of the network infrastructure was completed on schedule.

Luca Mammoletti concludes: «We are very satisfied with the cabling solution for our media data center.» The RSI team and the



050.7425

f.l.t.r.: Claudio Ciccone, R&M Switzerland; Flavio Gioia, P&T Services Manager, RSI; Luca Mammoletti, Head of P&T, RSI

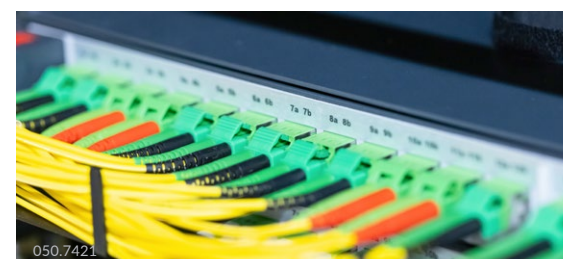
installer also gave valuable feedback from the field. At R&M, this feedback is incorporated directly into the further development and optimization of patch panels.

Further projects are being planned. R&M will equip other RSI buildings and the offices above the media data center with network infrastructures.



050.7426

**Claudio Ciccone** | R&M Switzerland  
claudio.ciccone@rdm.com



050.7421



050.7422



050.7423

### The R&M solution for RSI

The solution from R&M for the RSI media data center in Comano:

#### Fiber optics:

- PRIME ODF 19", 235 pcs.
- Patch panels: UniRack 24 port, 167 pcs.
- Connectivity:
  - Singlemode cable OS2 with LC duplex APC
  - Panel with E-2000™ APC

#### Copper:

- Connectivity: Cat. 6<sub>A</sub> EL, 3,000 pcs.
- Cable: Cat. 7<sub>A</sub> 1,300 MHz, 160 km

Special 19" rack for data transmission from mobile studio to data center



050.7424